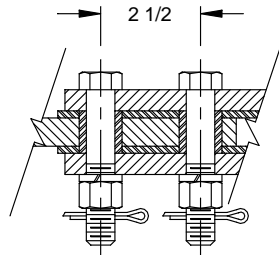
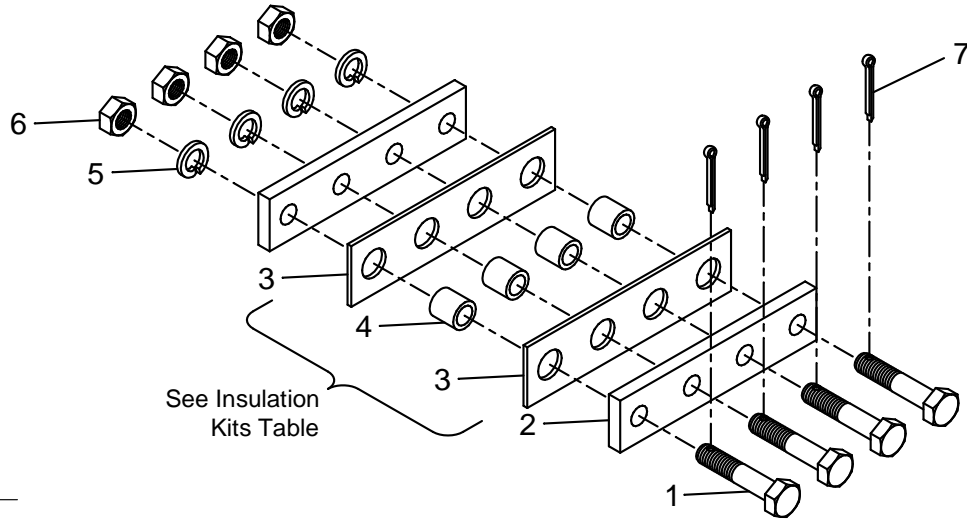


INSULATION

GRS FRONT RODS & BASKETS



REF A-C

| REF | J&A # | DESCRIPTION | BAR |
|-----|-------------|---|-------|
| A | 180123-000 | KIT, INSULATOR SET | 1 1/4 |
| B | 180123-001 | KIT, INSULATOR SET | 3/4 |
| C | 180123-002 | KIT, INSULATOR SET | 1 |
| 1A | 140451-001 | BOLT, HEX HEAD CAP WITH HOLE, 3/4-10 X 4" Z/P | 1 1/4 |
| 1B | 140451-000 | BOLT, HEX HEAD CAP WITH HOLE, 3/4-10 X 3 1/2" Z/P | 3/4 |
| 1C | 140451-003 | BOLT, HEX HEAD CAP WITH HOLE, 3/4-10 X 3 3/4" Z/P | 1 |
| 2 | 150070-000 | PLATE, CONNECTOR, 1/2" THICK | |
| 3 | 027010-000 | PLATE, INSULATOR WITH 4 HOLES | |
| 4A | 027012-001 | BUSHING, INSULATOR, 3/4" X 1 15/32" | 1 1/4 |
| 4B | 027012-002 | BUSHING, INSULATOR, 3/4" X 31/32" | 3/4 |
| 4C | 027012-000 | BUSHING, INSULATOR, 3/4" X 1 7/32" | 1 |
| 5 | 013000-010 | WASHER, SPLIT LOCK, 3/4" | |
| 6 | 013115-010 | NUT, HEAVY HEX, 3/4-10 Z/P | |
| 7 | 014001-0932 | PIN, COTTER, 3/16" X 2" Z/P | |

Insulation Kits

| REF | J&A # | DESCRIPTION | BAR |
|-----|------------|-----------------|-------|
| A1 | 180032-002 | KIT, INSULATION | 1 1/4 |
| B1 | 180032-000 | KIT, INSULATION | 3/4 |
| C1 | 180032-001 | KIT, INSULATION | 1 |