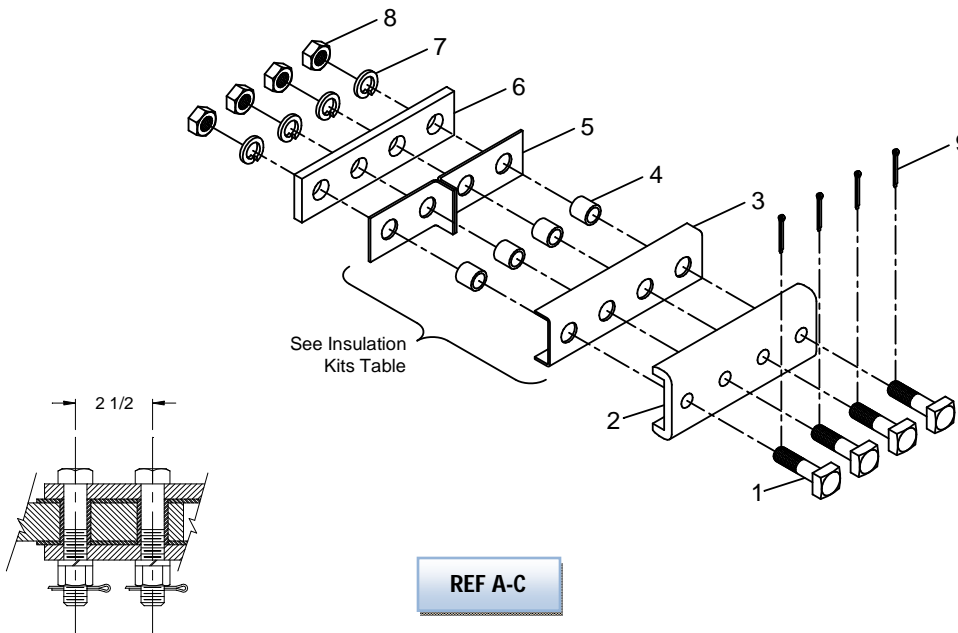


# INSULATION

## SMJ FRONT ROD



| REF | J&A #       | DESCRIPTION                                 | BAR   |
|-----|-------------|---|-------|
| A   | 180180-000  | KIT, INSULATOR SET FOR SMJ FRONT ROD        | 3/4   |
| B   | 180180-001  | KIT, INSULATOR SET FOR SMJ FRONT ROD        | 1     |
| C   | 160278-000  | KIT, INSULATOR SET FOR SMJ FRONT ROD        | 1 1/4 |
| 1A  | 140100-001  | SCREW, SQUARE HEAD, 3/4-10 X 3 1/2"         | 3/4   |
| 1B  | 140100-004  | SCREW, SQUARE HEAD, 3/4-10 X 3 3/4"         | 1     |
| 1C  | 140100-005  | SCREW, SQUARE HEAD, 3/4-10 X 4"             | 1 1/4 |
| 2   | 150196-000  | PLATE, CHANNEL, 1/2" X 9 1/2" WITH 4 HOLES  |       |
| 3   | 027009-000  | PLATE, CHANNEL INSULATOR, 2 3/4" X 1 X 1/8" |       |
| 4A  | 027012-002  | BUSHING, INSULATOR, 3/4" X 31/32"           | 3/4   |
| 4B  | 027012-000  | BUSHING, INSULATOR, 3/4" X 1 7/32"          | 1     |
| 4C  | 027012-001  | BUSHING, INSULATOR, 3/4" X 1 15/32"         | 1 1/4 |
| 5A  | 027011-002  | PLATE, INSULATOR                            | 3/4   |
| 5B  | 027011-001  | PLATE, INSULATOR                            | 1     |
| 5C  | 027011-000  | PLATE, INSULATOR                            | 1 1/4 |
| 6   | 150070-000  | PLATE, CONNECTOR, 1/2" THICK                |       |
| 7   | 013000-010  | WASHER, SPLIT LOCK, 3/4" Z/P                |       |
| 8   | 013115-010  | NUT, HEAVY HEX, 3/4-10 Z/P                  |       |
| 9   | 014001-0920 | PIN, COTTER, 3/16" X 1 1/4" Z/P             |       |

### Insulation Kits

| REF | J&A #      | DESCRIPTION     | BAR   |
|-----|------------|-----------------|-------|
| A1  | 180311-000 | KIT, INSULATION | 3/4   |
| B1  | 180311-001 | KIT, INSULATION | 1     |
| C1  | 180311-002 | KIT, INSULATION | 1 1/4 |