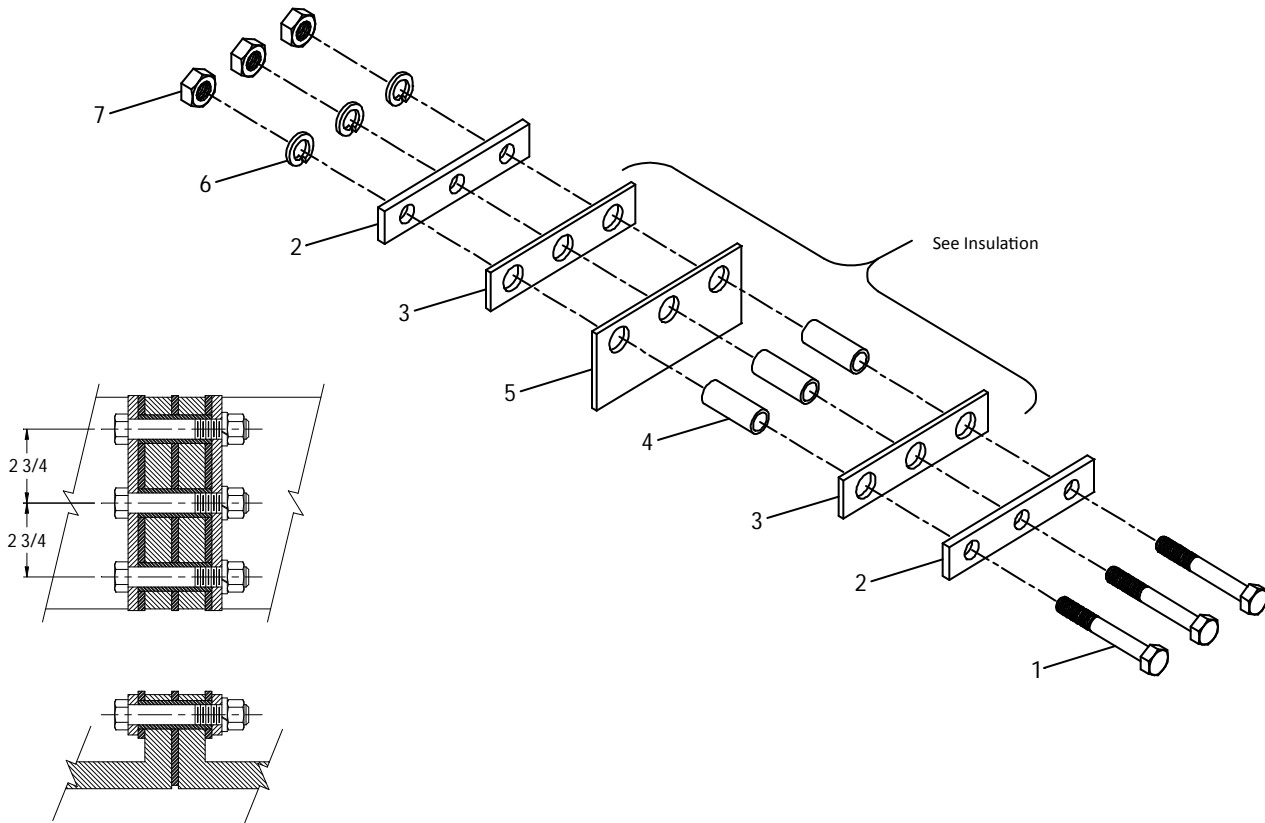
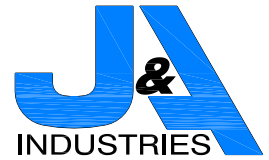


INSULATION

GRS GAUGE PLATE



REF	J&A #	DESCRIPTION
	180196-000	KIT, INSULATION FOR GAUGE PLATE
1	013203-680	BOLT, HEX HEAD CAP, 3/4-10 X 5" Z/P
2	150171-000	PLATE, 1 1/2" X 8" X 3/8" WITH 3 HOLES
3	019029-000	PLATE, INSULATOR, 1 3/4" X 8" X 1/4" WITH 3 HOLES
4	019021-007	BUSHING, INSULATOR, 3/4" X 2 11/16"
5	019028-000	PLATE, INSULATOR, 3 1/2" X 8" X 1/4" WITH 3 HOLES
6	013000-010	WASHER, SPLIT LOCK, 3/4" Z/P
7	013100-010	NUT, HEAVY HEX, 3/4-10 Z/P

Insulation Kit

J&A #	DESCRIPTION
180312-000	KIT, INSULATION