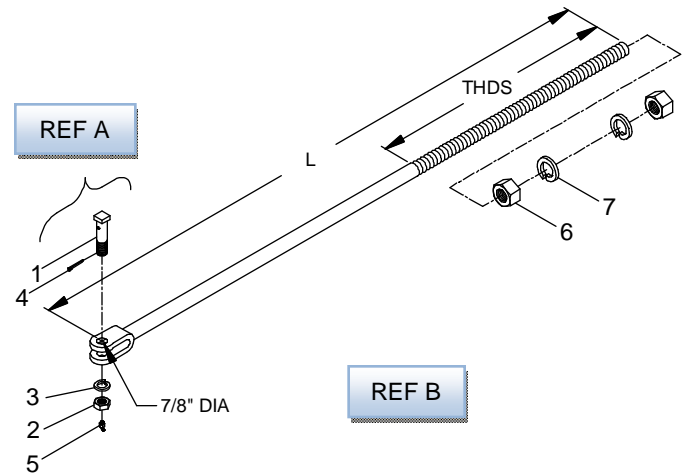


# US&S

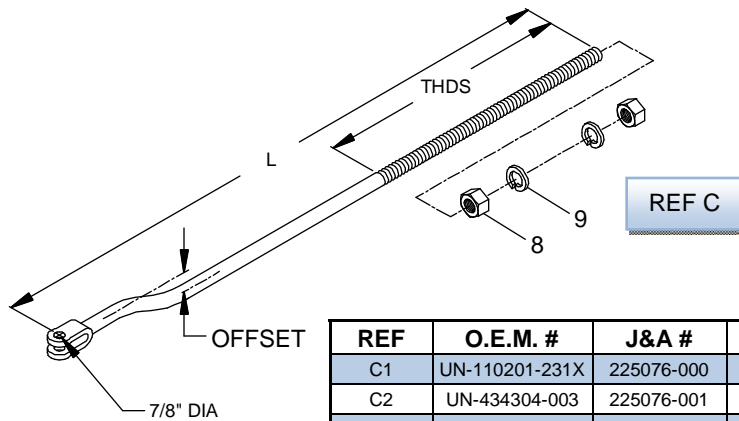
## THROW RODS



REF	J&A #	DESCRIPTION
A	180018-000	KIT, CLEVIS BOLT, 7/8" DIA
1	140141-000	BOLT, CLEVIS
2	013104-011	NUT, HEX JAM, 7/8-9 Z/P
3	013000-011	WASHER, SPLIT LOCK, 7/8" Z/P
4	014001-0932	PIN, COTTER, 3/16" X 2" Z/P
5	021000-007	FITTING, GREASE 1/4-28



REF	O.E.M. #	J&A #	DESCRIPTION	L	THDS
B1	UN-299473-000	225065-000	ROD, SOLID JAW	65	25
B2	UN-299473-001	225065-001	ROD, SOLID JAW	72	24
B3	UN-229473-002	225065-002	ROD, SOLID JAW	81	30
B4	UN-299473-003	225065-003	ROD, SOLID JAW	78	24
B5	UN-299473-004	225065-004	ROD, SOLID JAW	74	30
B6	UN-229473-005	225065-005	ROD, SOLID JAW	84	24
B7	UN-299473-006	225065-006	ROD, SOLID JAW	68	24
B8	UN-229473-007	225065-007	ROD, SOLID JAW	70	24
B9		225065-008	ROD, SOLID JAW	78	30
B10		225065-009	ROD, SOLID JAW	90	30
6		013115-014	NUT, HEAVY HEX, 1 1/4"-7 Z/P		
7		013000-015	WASHER, SPLIT LOCK, 1 1/4" Z/P		
A		180018-000	KIT, CLEVIS BOLT, 7/8" (SEE ABOVE)		



REF	O.E.M. #	J&A #	DESCRIPTION	L	THDS	OFFSET
C1	UN-110201-231X	225076-000	ROD, SOLID JAW	98	25	1 7/8
C2	UN-434304-003	225076-001	ROD, SOLID JAW	82	25	1 7/8
C3	153-255	225076-002	ROD, SOLID JAW	72	25	2 1/8
C4	153-108	225076-003	ROD, SOLID JAW	72	25	3
C5		225076-004	ROD, SOLID JAW	72	25	2 3/4
C6		225076-005	ROD, SOLID JAW	71	25	1
C7	46890-3GR2	225076-006	ROD, SOLID JAW	72	26	3 1/2
C8		225076-007	ROD, SOLID JAW	74	25	1 7/8
C9		225076-008	ROD, SOLID JAW	42	10	3
8		013115-014	NUT, HEAVY HEX, 1 1/4"-7 Z/P			
9		013000-015	WASHER, SPLIT LOCK, 1 1/4" Z/P			